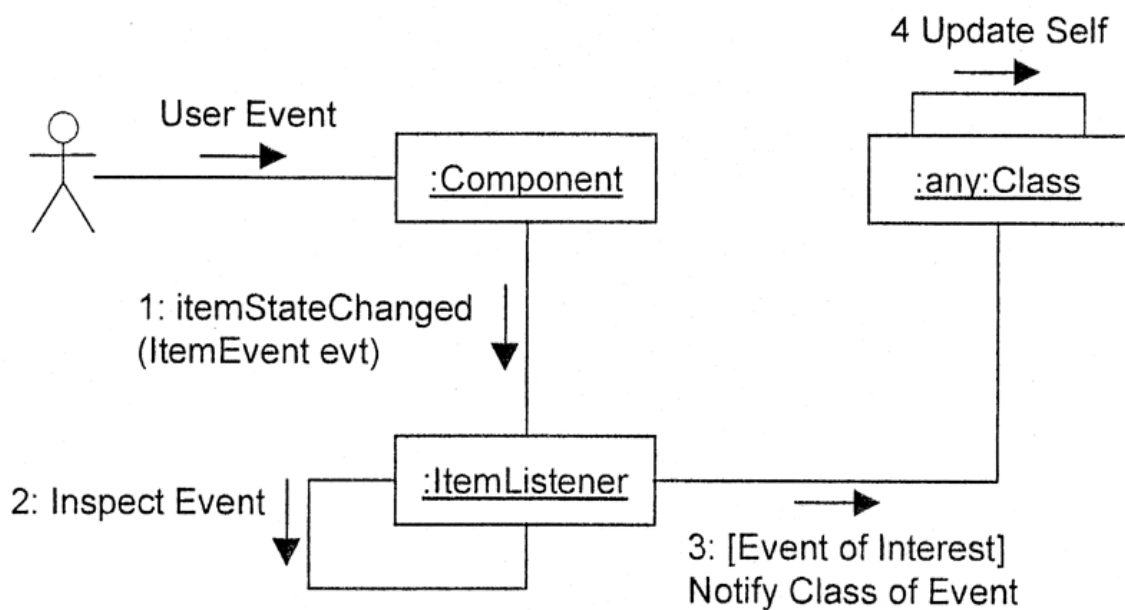


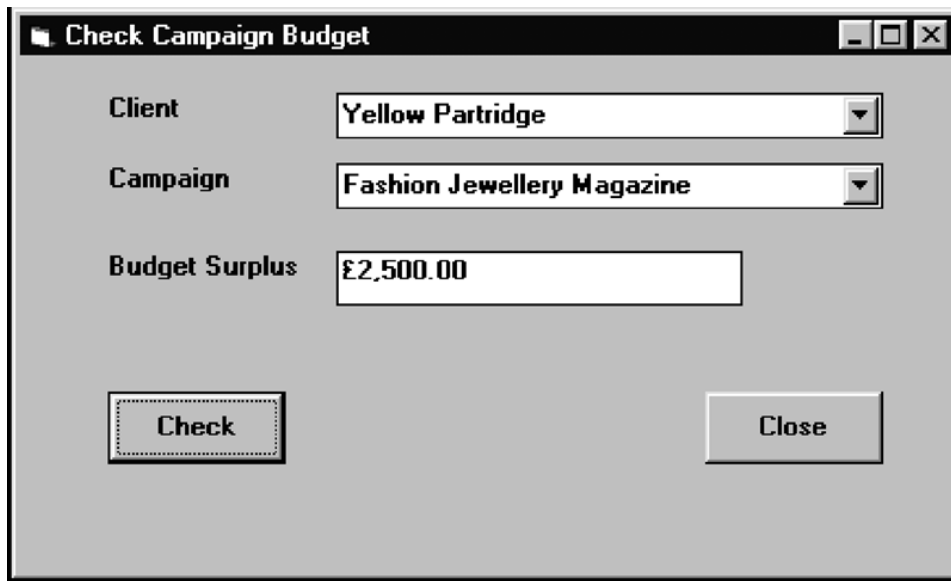
Information Systems Analysis & Design (M8748)

Tutorial 17

1. Why should the user interface classes be kept separate from the business classes and application logic?
2. Explain the difference between vertical and horizontal prototyping.
3. What is meant by a throwaway prototype?
4. What does the «import» stereotype mean?
5. What role does each element of the Model-View-Controller architecture play?
6. What else do we use statechart diagrams for, apart from modeling the state of interface objects?
7. What are the five steps in preparing a statechart to model a user interface?
8. What information is held in an Event-Action table?
9. Convert the collaboration diagram of the following figure into a sequence diagram.



10. Convert the collaboration diagram of the following figure into a sequence diagram.



11. What are the differences between the MVC and Java EventListener approaches?

12. Convert the sequence diagram of Figure 17.38 into a collaboration diagram.

13. Convert the sequence diagram of Figure 17.39 into a collaboration diagram.